

VALLEY GROVE TOWER

CLASS A OFFICE



FOR LEASE | 2100 W. PLEASANT GROVE BLVD | PLEASANT GROVE, UT



VALLEY GROVE

LEASE AVAILABLE

\$27.50 / SF / FULL SERVICE

CODY BLACK

SENIOR VICE PRESIDENT

+1 801 687 0094

cody.black@colliers.com

Accelerating success.

Colliers International
2100 Pleasant Grove Blvd. | Suite 200
Pleasant Grove, UT 84062
P: +1 801 836 1300





AVAILABLE NOW

NO OTHER DEVELOPMENT OFFERS COMPANIES OF NEARLY ANY SIZE AND TYPE TO STAGE EXPANSION LIKE VALLEY GROVE. GROW YOUR BUSINESS CONFIDENTLY WITH A REAL ESTATE PARTNER WHO OWNS MORE THAN NINETEEN MILLION SQUARE FEET OF OFFICE, RETAIL, AND FLEXSPACE NATIONWIDE. LOCATED ADJACENT TO THE NEW RETAIL AND OFFICE DEVELOPMENTS WITH EASY ACCESS TO I-15, VALLEY GROVE 1 FEATURES THE FOLLOWING:

PROPERTY FEATURES

- CROWN SIGNAGE FACING I-15
- PARKING 5/1,000 RATIO
- FIBER OPTIC CONNECTIVITY
- ADJACENT TO OVER 80 ACRES OF PRIME FUTURE RETAIL AND HOSPITALITY AMENITIES.
- INCREDIBLE VIEWS
- 6 STORY CLASS 'A' BUILDING
- FLOOR TO CEILING GLASS
- 10 FT OR HIGHER MINIMUM FINISHED CEILING HEIGHT
- OPEN CEILING OPTIONS
- GENEROUS BUILDOUT ALLOWANCE

CODY BLACK

SENIOR VICE PRESIDENT
+1 801 687 0094
cody.black@colliers.com

Accelerating success.

Colliers International
2100 Pleasant Grove Blvd. | Suite 200
Pleasant Grove, UT 84062
P: +1 801 836 1300





PART of a 60-ACRE MIXED USE DESTINATION



FOR LEASE | 1064 S. North County Blvd. Pleasant Grove | UT

AN ICONIC BUSINESS COMMUNITY, VALLEY GROVE IS A 60-ACRE MIXED USE DESTINATION RISING IN THE HEART OF UTAH COUNTY. WITH UNMATCHED ACCESS TO I-15 AND NORTH COUNTY BOULEVARD, VALLEY GROVE PROVIDES PEOPLE MORE TIME TO EAT, SLEEP, PLAY, AND WORK INSTEAD OF WAITING IN TRAFFIC. UPON COMPLETION, THE \$300 MILLION VALLEY GROVE DEVELOPMENT WILL CONTAIN OVER ONE MILLION SQUARE FEET OF CLASS 'A' OFFICE, RETAIL, RESTAURANTS, AND A HOTEL.

Leasing:

\$27.50

PSF FS

CODY BLACK
SENIOR VICE PRESIDENT
+1 801 687 0094
cody.black@colliers.com

Accelerating success.

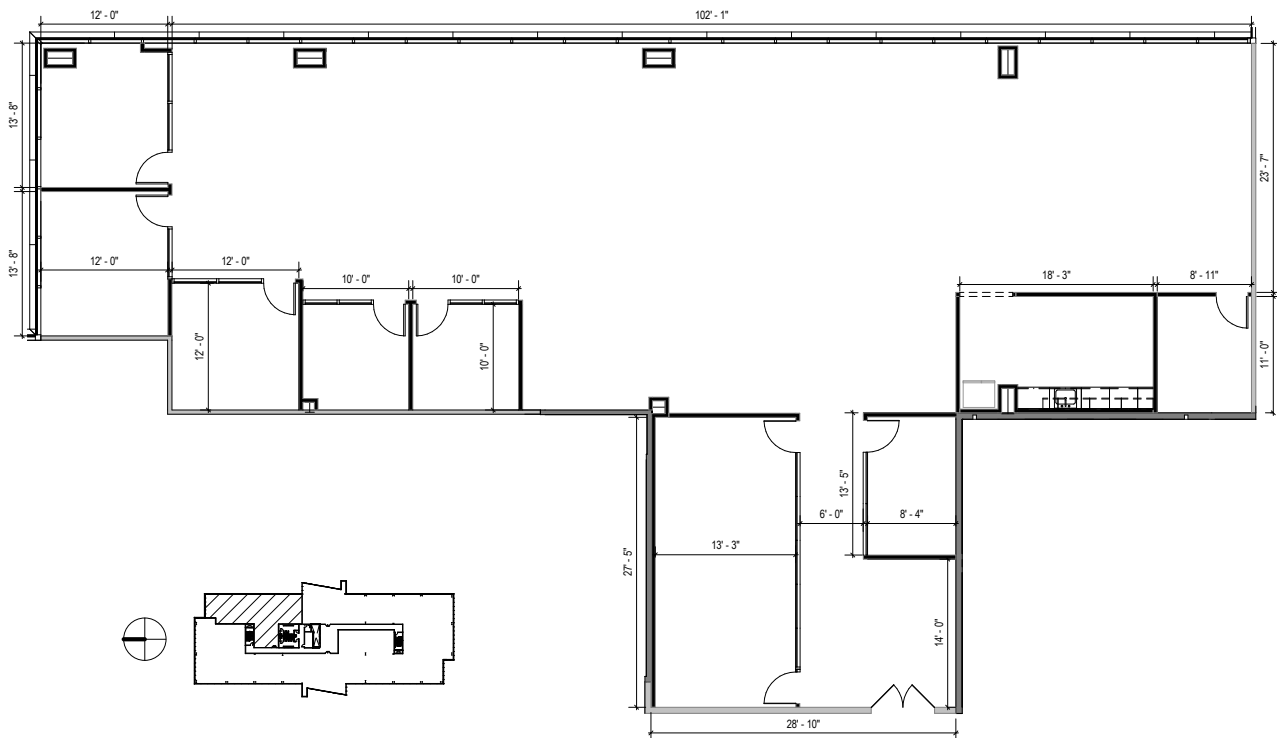
Colliers International
2100 Pleasant Grove Blvd. | Suite 200
Pleasant Grove, UT 84062
P: +1 801 836 1300





FLOOR PLAN | Third Floor

TOTAL SF AVAILABLE:
Up to 5,420 SF



CODY BLACK
SENIOR VICE PRESIDENT
+1 801 687 0094
cody.black@colliers.com

Accelerating success.

Colliers International
2100 Pleasant Grove Blvd. | Suite 200
Pleasant Grove, UT 84062
P: +1 801 836 1300



MASTER SITEPLAN | CURRENT TENANTS



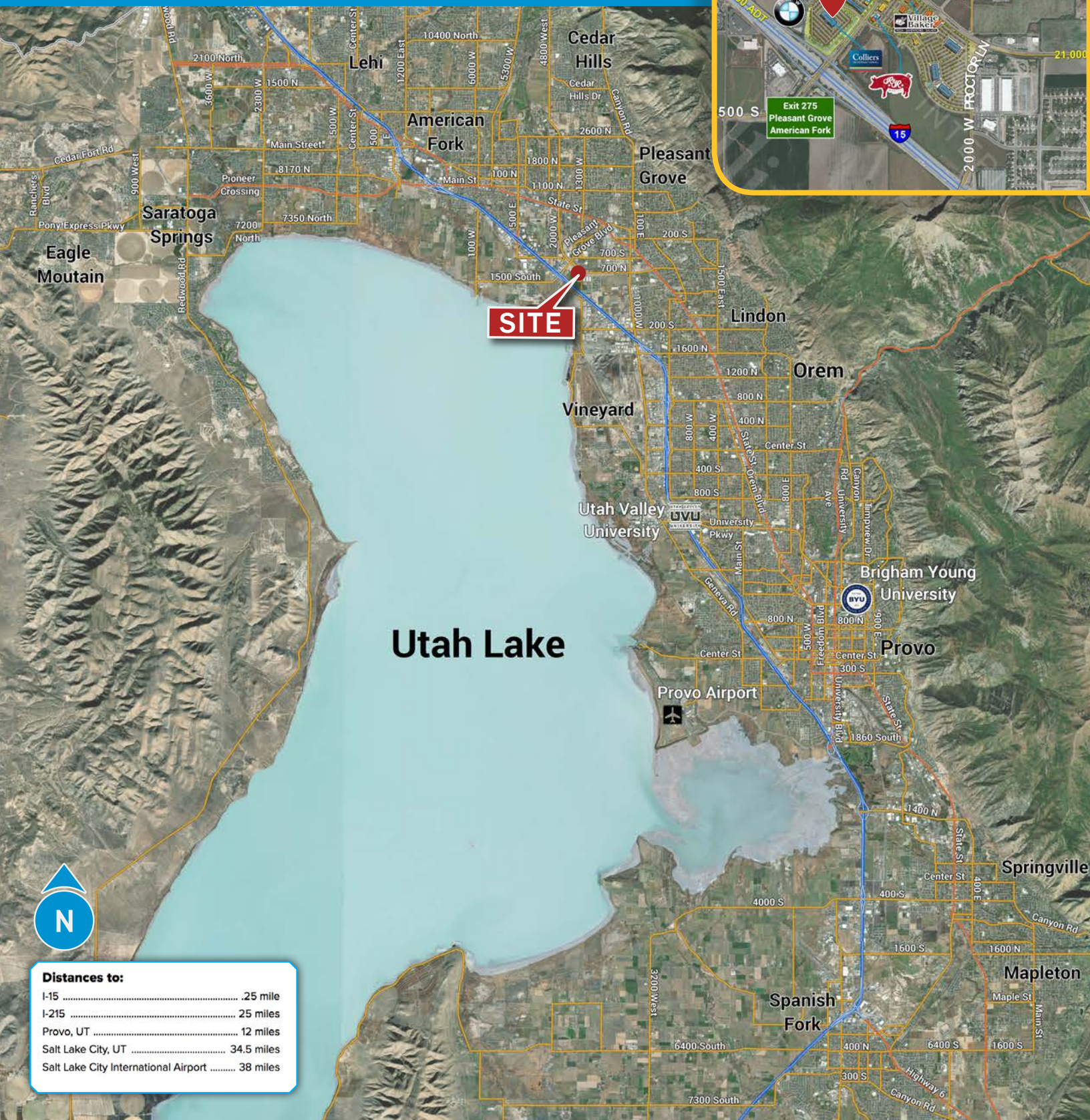
CODY BLACK
 SENIOR VICE PRESIDENT
 +1 801 687 0094
 cody.black@colliers.com

Accelerating success.

Colliers International
 2100 Pleasant Grove Blvd. | Suite 200
 Pleasant Grove, UT 84062
 P: +1 801 836 1300



MAPS | Location & Retail



Distances to:

| | | |
|--------------------------------------|-------|------------|
| I-15 | | .25 mile |
| I-215 | | 25 miles |
| Provo, UT | | 12 miles |
| Salt Lake City, UT | | 34.5 miles |
| Salt Lake City International Airport | | 38 miles |

CODY BLACK
 SENIOR VICE PRESIDENT
 +1 801 687 0094
 cody.black@colliers.com

Accelerating success.

Colliers International
 2100 Pleasant Grove Blvd. | Suite 200
 Pleasant Grove, UT 84062
 P: +1 801 836 1300

